



شركة الاستثمار الوطنية
NATIONAL INVESTMENTS COMPANY

Bursa Kuwait – Daily Market Report MENA Securities – Research & Studies Dep.

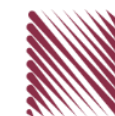
03rd November 2022



www.nic.com.kw

DAILY MARKET COVERAGE REPORT

NIC MENA SECURITIES - RESEARCH AND STUDIES DEP



Kuwait Market Watch

Thursday, November 3, 2022

Index	Close	DTD Chg Net	DTD (%)	YTD (%)	52W High	52W Low	MKT CAP Bn (KD)	PBV (X)	PE (X)	DY (%)
All Share Index	7,365.19	-15.97	-0.22%	4.57%	8,472.15	6,788.83	43.70	1.94	31.04	4.12
Premier Index	8,241.20	-18.89	-0.23%	7.88%	9,437.37	7,343.90	34.44	2.14	32.19	4.58
Main Index	5,530.46	-9.21	-0.17%	-6.04%	6,600.62	5,190.37	9.26	1.18	26.77	2.39
NIC 50 Index	9,226.35	-21.47	-0.23%	8.26%	10,553.82	8,195.69	33.74	2.14	32.19	4.58

Index	Value Mn(KD)	Volume (Mn share)
All Share Index	44.19	122.27
Premier Index	37.62	67.64
Main Index	6.57	54.63
NIC 50 Index	43.43	112.62

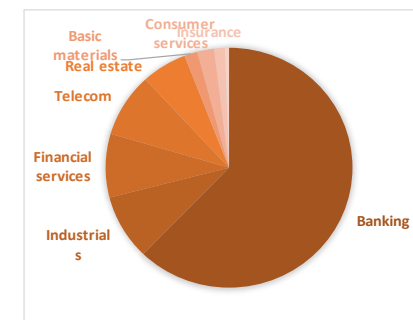
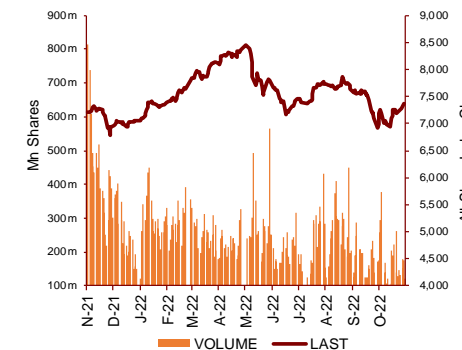
Market Breadth	UP	Down	No Chg
All Share Index	48	58	46
Premier Index	6	16	3
Main Index	42	42	43
NIC 50 Index	14	28	8

Today's Top 5 Gainer %	Close KD	Value KD	DTD (%)
Al Deera Holding	0.175	175	7.36%
Aqar Real Estate Investments	0.059	8,056	6.08%
National Industries	0.200	7,733	4.71%
Real Estate Trade Centers	0.050	23	4.59%
Kuwait National Cinema	0.950	23,659	4.51%

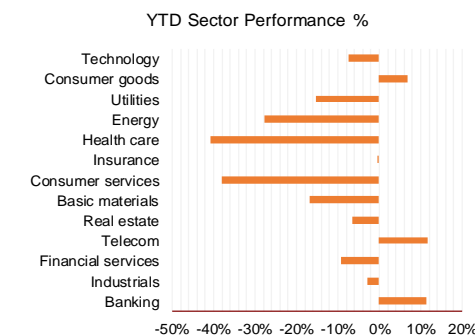
Today's Top 5 Loser %	Close KD	Value KD	DTD (%)
Senergy Holding	0.037	12,705	-7.59%
Privatization Holding	0.034	23,378	-5.79%
Fujairah Cement Industries	0.035	5,172	-5.46%
United Projects for Aviation	0.212	4,145	-4.93%
Al Manar Financing and Leasing	0.059	46,942	-4.84%

Today's Top 5 by Value	Close KD	Trade Val Mn(KD)	DTD (%)
Kuwait Finance House	0.808	15.06	-0.74%
National Bank of Kuwait	1.110	6.72	0.91%
Integrated Holding	0.330	2.62	0.92%
Mobile Telecommunications	0.600	2.41	-0.66%
National Industries Group Hold	0.237	1.82	-0.84%

Top 5 by Volume	Close KD	Trade Vol Mn(Shrs)	DTD (%)
Kuwait Finance House	0.808	18.63	-0.74%
Aayan Leasing and Investment	0.132	10.24	2.33%
Integrated Holding	0.330	7.89	0.92%
National Industries Group H	0.237	7.68	-0.84%
National Bank of Kuwait	1.110	6.08	0.91%

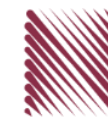


Sector	Close	DTD Chg Net	DTD (%)	YTD (%)	52W High	52W Low	MKT CAP Bn (KD)	PBV (X)	PE (X)	DY (%)
Banking	1,806.43	-3.120	-0.17%	11.5%	1,992.2	1,557.8	26.828	1.65	25.03	1.83
Industrials	1,108.50	0.330	0.03%	-2.9%	1,443.6	976.3	3.785	1.00	20.31	3.90
Financial services	1,283.10	-8.060	-0.62%	-9.3%	1,678.3	1,190.4	3.694	1.01	30.83	2.90
Telecom	1,212.38	-4.340	-0.36%	11.7%	1,514.7	1,055.9	3.710	1.35	13.46	2.80
Real estate	1,233.09	-5.780	-0.47%	-6.6%	1,438.0	1,155.8	2.575	0.68	32.81	1.34
Basic materials	852.14	-0.690	-0.08%	-16.8%	1,233.3	800.8	0.743	1.21	8.98	6.26
Consumer services	450.21	-3.440	-0.76%	-38.0%	776.8	447.8	0.948	2.13	28.41	2.19
Insurance	1,521.68	-11.640	-0.76%	0.0%	1,675.7	1,434.5	0.606	0.83	44.23	5.25
Health care	472.74	0.000	0.00%	-40.7%	821.7	420.4	0.234	15.77	12.71	1.06
Energy	1,036.98	4.010	0.39%	-27.7%	1,592.9	975.7	0.210	0.80	21.00	2.36
Utilities	507.89	0.000	0.00%	-15.4%	650.0	494.7	0.212	2.17	14.78	9.33
Consumer goods	1,431.39	5.290	0.37%	6.7%	1,641.0	1,208.7	0.136	0.90	36.89	2.18
Technology	603.82	-29.100	-4.60%	-7.4%	843.9	539.1	0.008	0.77	NM	-
	7,365.19	-15.97	-0.22%	4.6%	8,472.2	6,788.8	43.70	1.94	31.04	4.12



DAILY MARKET COVERAGE REPORT

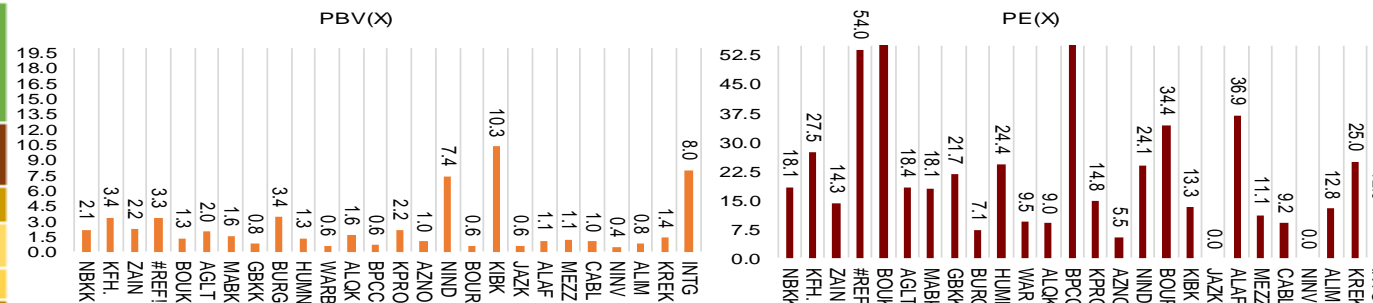
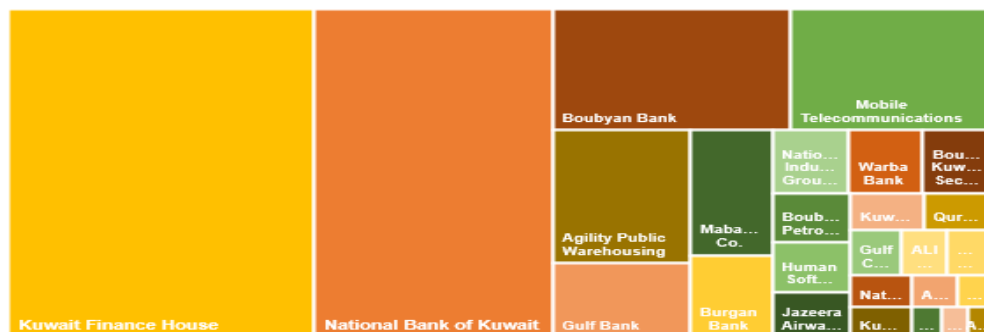
NIC MENA SECURITIES - RESEARCH AND STUDIES DEP



Premier Market

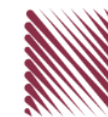
Thursday, November 3, 2022

Premier Market	Price			Valuation Multiples			MKT Cap	Price Performance		Trading Indicators		ROE	ROA	52 Week (KD)		MKT Cap
	Close (KD)	Day Δ	Day % Δ	PBV(X)	PE(X)	DY%	Mn KD	MTD(%)	YTD (%)	Value (Mn KD)	(Mn Shrs)	(%)	(%)	High	Low	%
National Bank of Kuwait	1.110	0.010	0.91%	2.11	18.13	2.21	8,383	3%	16%	6.72	6.08	11.7%	1.5%	1.104	0.903	24.34%
Kuwait Finance House	0.808	-0.006	-0.74%	3.36	27.46	1.34	10,691	0%	8%	15.06	18.63	12.4%	1.6%	1.039	0.720	31.04%
Mobile Telecommunications	0.600	-0.004	-0.66%	2.20	14.28	5.46	2,596	1%	2%	2.41	4.02	15.6%	4.3%	0.698	0.564	7.54%
Boubyan Bank	0.821	-0.009	-1.08%	3.29	54.00	0.54	3,069	0%	17%	1.13	1.37	6.8%	0.8%	0.965	0.681	8.91%
Agility Public Warehousing	0.778	-0.002	-0.26%	1.33	59.91	2.14	1,965	-1%	-1%	1.13	1.45	2.7%	2.2%	1.062	0.634	5.71%
Mabane Co.	0.875	-0.014	-1.57%	1.96	18.40	1.49	1,086	0%	19%	0.33	0.38	11.1%	5.5%	0.910	0.717	3.15%
Gulf Bank	0.342	-0.002	-0.58%	1.56	18.06	1.94	1,095	0%	29%	0.98	2.88	8.9%	0.9%	0.385	0.230	3.18%
Burgan Bank	0.219	0.001	0.46%	0.79	21.67	2.18	719	0%	-9%	0.13	0.59	3.8%	0.7%	0.307	0.205	2.09%
Human Soft Holding	3.371	-0.019	-0.56%	3.41	7.14	11.80	410	0%	5%	0.36	0.11	49.6%	34.9%	3.704	3.006	1.19%
Warba Bank	0.241	-0.001	-0.41%	1.33	24.42	0.00	482	0%	-12%	0.51	2.12	5.8%	0.6%	0.298	0.216	1.40%
Qurain Petrochemical Industries	0.248	0.000	0.00%	0.61	9.49	7.26	266	-2%	-29%	0.04	0.17	6.4%	5.2%	0.403	0.210	0.77%
Boubyan Petrochemical	0.798	-0.001	-0.13%	1.63	9.04	7.51	416	0%	-6%	0.32	0.40	19.1%	10.1%	1.125	0.769	1.21%
Kuwait Projects Company Holding	0.118	-0.001	-0.84%	0.63	305.13	4.20	289	0%	-16%	0.17	1.48	0.2%	0.1%	0.215	0.112	0.84%
Shamal Az-Zour Al-Oula Power & Water	0.193	0.000	0.00%	2.17	14.78	9.33	212	0%	-15%	0.18	0.93	19.1%	2.9%	0.247	0.188	0.62%
National Industries Group Holding	0.237	-0.002	-0.84%	1.00	5.50	4.65	511	1%	-1%	1.82	7.68	15.2%	6.5%	0.314	0.207	1.48%
Boursa Kuwait Securities Co	2.305	-0.009	-0.39%	7.42	24.07	2.81	463	1%	15%	0.21	0.09	32.4%	22.9%	2.870	1.800	1.34%
Kuwait International Bank	0.190	-0.001	-0.52%	0.61	34.41	2.01	201	1%	-9%	0.10	0.52	1.7%	0.3%	0.259	0.186	0.58%
Jazeera Airways	1.731	-0.016	-0.92%	10.33	13.33	2.63	381	4%	35%	0.90	0.52	92.1%	11.6%	2.099	0.981	1.11%
Alafco Aviation Lease and Finance	0.166	0.002	1.22%	0.61	NM	0.00	158	-1%	-25%	0.33	2.00	-15.9%	-3.4%	0.256	0.162	0.46%
Mezzan Holding	0.358	-0.002	-0.56%	1.05	36.89	4.36	111	-1%	-38%	0.49	1.36	2.8%	1.3%	0.613	0.358	0.32%
Gulf Cable and Electrical Industries	1.206	0.005	0.42%	1.11	11.14	5.00	251	0%	38%	0.09	0.07	11.0%	NM	1.850	0.860	0.73%
National Investments	0.257	0.010	4.05%	0.98	9.23	18.22	205	8%	13%	0.68	2.68	10.9%	8.9%	0.475	0.201	0.60%
Alimtia Investment Group	0.075	0.000	0.00%	0.44	NM	12.08	76	0%	-37%	0.01	0.16	-0.9%	-0.4%	0.138	0.069	0.22%
Kuwait Real Estate	0.104	-0.001	-0.95%	0.77	12.79	2.77	96	-5%	-40%	0.35	3.37	6.0%	2.5%	0.187	0.097	0.28%
Integrated Holding	0.330	0.003	0.92%	1.35	25.00	3.06	83	1%	-12%	2.62	7.89	5.4%	3.4%	0.478	0.321	0.24%
ALI ALGanim	0.805	0.006	0.75%	7.99	12.53	5.95	223	1%	nm	0.54	0.68	27.8%	10.9%	0.966	0.750	0.65%
Total		-18.89	-0.23%	2.14	32.19	4.58	34,441	0.7%	7.9%	37.62	66.96					100%



DAILY MARKET COVERAGE REPORT

NIC MENA SECURITIES - RESEARCH AND STUDIES DEP



Premier Market Company	Price			Valuation Multiples			MKT Cap Mn KD	Price Performance		ROE (%)	ROA (%)
	Close (KD)	Day Δ	Day % Δ	PBV(X)	PE (X)	DY%		MTD(%)	YTD (%)		
National Bank of Kuwait	1.110	0.010	0.91%	2.11	18.1	2.21	8,383	2.9%	15.8%	11.7%	1.5%
Kuwait Finance House	0.808	-0.006	-0.74%	3.36	27.5	1.34	10,691	-0.1%	7.6%	12.4%	1.6%
Mobile Telecommunications	0.600	-0.004	-0.66%	2.20	14.3	5.46	2,596	0.5%	1.5%	15.6%	4.3%
Boubyan Bank	0.821	-0.009	-1.08%	3.29	54.0	0.54	3,069	-0.2%	16.5%	6.8%	0.8%
Agility Public Warehousing	0.778	-0.002	-0.26%	1.33	59.9	2.14	1,965	-0.8%	-1.0%	2.7%	2.2%
Mabane Co.	0.875	-0.014	-1.57%	1.96	18.4	1.49	1,086	0.3%	18.8%	11.1%	5.5%
Gulf Bank	0.342	-0.002	-0.58%	1.56	18.1	1.94	1,095	-0.3%	29.5%	8.9%	0.9%
Burgan Bank	0.219	0.001	0.46%	0.79	21.7	2.18	719	-0.5%	-8.8%	3.8%	0.7%
Human Soft Holding	3.371	-0.019	-0.56%	3.41	7.1	11.80	410	0.3%	5.1%	49.6%	34.9%
Warba Bank	0.241	-0.001	-0.41%	1.33	24.4	0.00	482	0.0%	-11.7%	5.8%	0.6%
Qurain Petrochemical Industries	0.248	0.000	0.00%	0.61	9.5	7.26	266	-1.6%	-28.5%	6.4%	5.2%
Boubyan Petrochemical	0.798	-0.001	-0.13%	1.63	9.0	7.51	416	0.1%	-6.2%	19.1%	10.1%
Kuwait Projects Company Holding	0.118	-0.001	-0.84%	0.63	305.1	4.20	289	0.0%	-16.2%	0.2%	0.1%
Shamal Az-Zour Al-Oula Power & Water	0.193	0.000	0.00%	2.17	14.8	9.33	212	0.0%	-15.4%	19.1%	2.9%
National Industries Group Holding	0.237	-0.002	-0.84%	1.00	5.5	4.65	511	1.3%	-0.8%	15.2%	6.5%
Boursa Kuwait Securities Co	2.305	-0.009	-0.39%	7.42	24.1	2.81	463	1.5%	14.6%	32.4%	22.9%
Kuwait International Bank	0.190	-0.001	-0.52%	0.61	34.4	2.01	201	0.5%	-8.9%	1.7%	0.3%
Jazeera Airways	1.731	-0.016	-0.92%	10.33	13.3	2.63	381	3.6%	35.4%	92.1%	11.6%
Alafco Aviation Lease and Finance	0.166	0.002	1.22%	0.61	NM	0.00	158	-1.2%	-24.8%	-15.9%	-3.4%
Mezzan Holding	0.358	-0.002	-0.56%	1.05	36.9	4.36	111	-1.1%	-37.7%	2.8%	1.3%
Gulf Cable and Electrical Industries	1.206	0.005	0.42%	1.11	11.1	5.00	251	0.1%	37.9%	11.0%	9.0%
National Investments	0.257	0.010	4.05%	0.98	9.2	18.22	205	7.5%	12.8%	10.9%	8.9%
Alimtiiaz Investment Group	0.075	0.000	0.00%	0.44	NM	12.08	76	-0.1%	-36.9%	-0.9%	-0.4%
Kuwait Real Estate	0.104	-0.001	-0.95%	0.77	12.8	2.77	96	-5.5%	-39.6%	6.0%	2.5%
Integrated Holding	0.330	0.003	0.92%	1.35	25.0	3.06	83	1.2%	-11.6%	5.4%	3.4%
ALI ALGanim	0.805	0.006	0.75%	3.69	12.5	5.95	223	1.3%	nm	27.8%	10.9%
Total		-18.89	-0.23%	2.14	32.19	4.58	34,218	0.7%	7.9%		

Discription	Close (KD)	Day Δ	Day % Δ	50 Day	200 Day	14 Day	Mn KD	MTD(%)	YTD (%)	High	Low
Premier Index	8,241	-18.89	-0.23%	8,241	8,453	78	34,218	0.7%	8.0%	9,437	7,344

Top 5 Performrs (Today's Price Change)

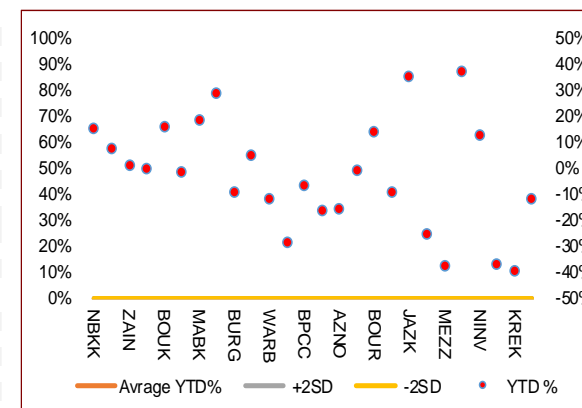
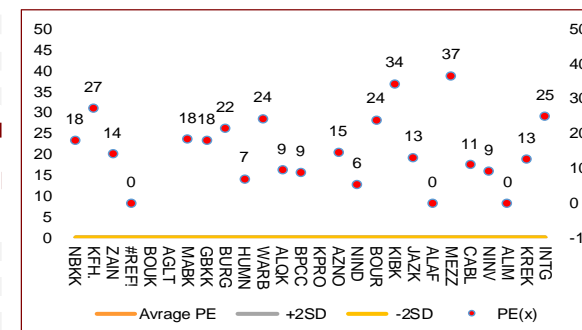
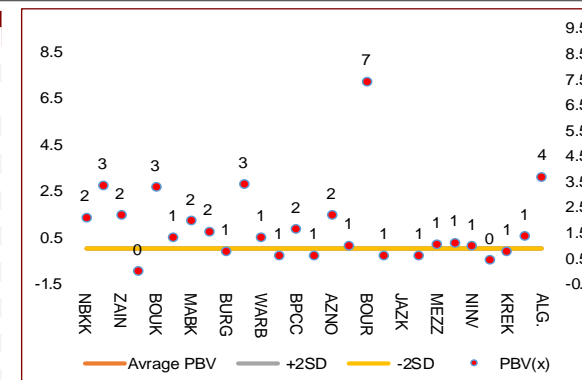
National Investments	0.257	0.010	4.05%	0.257	0.314	76	205	7.5%	12.8%	0.475	0.201
Alafco Aviation Lease and Finance	0.166	0.002	1.22%	0.181	0.202	42	158	-1.2%	-24.8%	0.256	0.162
Integrated Holding	0.330	0.003	0.92%	0.374	0.398	29	83	1.2%	-11.6%	0.478	0.321
National Bank of Kuwait	1.110	0.010	0.91%	1.035	1.037	85	8,383	2.9%	15.8%	1.104	0.903
Burgan Bank	0.219	0.001	0.46%	0.229	0.253	52	719	-0.5%	-8.8%	0.307	0.205

Middel Performrs (Today's Price Change)

Gulf Cable and Electrical Industries	1.206	0.005	0.42%	1.244	1.333	67	251	0.1%	37.9%	1.850	0.860
Ahli United Bank BSC	#N/A	#N/A	#N/A	0.305	0.287	50	#N/A	#N/A	#N/A	0.336	0.240
Qurain Petrochemical Industries	0.248	0.000	0.00%	0.281	0.341	53	266	-1.6%	-28.5%	0.403	0.210
Shamal Az-Zour Al-Oula Power & Water	0.193	0.000	0.00%	0.196	0.211	62	212	0.0%	-15.4%	0.247	0.188
Alimtiiaz Investment Group	0.075	0.000	0.00%	0.082	0.107	55	76	-0.1%	-36.9%	0.138	0.069
Boubyan Petrochemical	0.798	-0.001	-0.13%	0.852	0.936	46	416	0.1%	-6.2%	1.125	0.769
Agility Public Warehousing	0.778	-0.002	-0.26%	0.759	0.855	82	1,965	-0.8%	-1.0%	1.062	0.634
Boursa Kuwait Securities Co	2.305	-0.009	-0.39%	2.245	2.373	74	463	1.5%	14.6%	2.870	1.800
Warba Bank	0.241	-0.001	-0.41%	0.238	0.260	88	482	0.0%	-11.7%	0.298	0.216
Kuwait International Bank	0.190	-0.001	-0.52%	0.100	0.100	41	201	0.5%	-8.9%	1.210	0.996
Human Soft Holding	3.371	-0.019	-0.56%	3.343	3.318	70	410	0.3%	5.1%	3.704	3.006
Gulf Bank	0.342	-0.002	-0.58%	0.332	0.322	85	1,095	-0.3%	29.5%	0.385	0.230
Mobile Telecommunications	0.600	-0.004	-0.66%	0.593	0.611	69	2,596	0.5%	1.5%	0.698	0.564
Kuwait Finance House	0.808	-0.006	-0.74%	0.850	0.874	71	10,691	-0.1%	7.6%	1.039	0.720

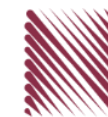
Bottom 5 Performrs (Today's Price Change)

Kuwait Projects Company Holding	0.118	-0.001	-0.84%	0.137	0.162	50	289	0.0%	-16.2%	0.215	0.112
National Industries Group Holding	0.237	-0.002	-0.84%	0.247	0.259	72	511	1.3%	-0.8%	0.314	0.207
Kuwait Real Estate	0.104	-0.001	-0.95%	0.113	0.144	58	96	-5.5%	-39.6%	0.187	0.097
Boubyan Bank	0.821	-0.009	-1.08%	0.813	0.809	75	3,069	-0.2%	16.5%	0.965	0.681
Mabane Co.	0.875	-0.014	-1.57%	0.856	0.817	70	1,086	0.3%	18.8%	0.910	0.717



DAILY MARKET COVERAGE REPORT

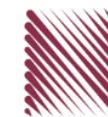
NIC MENA SECURITIES - RESEARCH AND STUDIES DEP



Banking Sector		Price			Valuation Multiples			MKT Cap	Price Performance		Trading Indicators		ROE	ROA	52 Week (KD)		MKT Cap
Company	Close (KD)	Day Δ	Day % Δ	PBV(X)	PE(X)	DY%	Mn KD	MTD(%)	YTD (%)	Value (Mn KD)	(Mn Shrs)	(%)	(%)	High	Low	%	
National Bank of Kuwait	1.110	0.010	0.91%	2.11	18.13	2.21	8,383	2.9%	15.8%	6.72	6.08	11.7%	1.5%	1.104	0.903	19.19%	
Kuwait Finance House	0.808	-0.006	-0.74%	3.36	27.46	1.34	10,691	-0.1%	7.6%	15.06	18.63	12.4%	1.6%	1.039	0.720	24.47%	
Boubyan Bank	0.821	-0.009	-1.08%	3.29	54.00	0.54	3,069	-0.2%	16.5%	1.13	1.37	6.8%	0.8%	0.965	0.681	7.02%	
Commercial Bank of Kuwait	0.486	0.000	0.00%	1.15	12.11	4.12	963	0.0%	-3.0%	0.00	0.00	9.9%	1.9%	0.549	0.456	2.20%	
Gulf Bank	0.342	-0.002	-0.58%	1.56	18.06	1.94	1,095	-0.3%	29.5%	0.98	2.88	8.9%	0.9%	0.385	0.230	2.51%	
Burgan Bank	0.219	0.001	0.46%	0.79	21.67	2.18	719	-0.5%	-8.8%	0.13	0.59	3.8%	0.7%	0.307	0.205	1.65%	
Ahli United Bank	0.287	-0.003	-1.03%	0.98	25.57	1.64	646	7.5%	-1.5%	0.33	1.14	3.8%	0.8%	0.324	0.250	1.48%	
Warba Bank	0.241	-0.001	-0.41%	1.33	24.42	0.00	482	0.0%	-11.7%	0.51	2.12	5.8%	0.6%	0.298	0.216	1.10%	
Al Ahli Bank of Kuwait	0.327	-0.001	-0.30%	0.97	21.55	1.45	579	-1.8%	35.6%	0.25	0.76	4.5%	0.6%	0.355	0.216	1.33%	
Kuwait International Bank	0.190	-0.001	-0.52%	0.61	34.41	2.01	201	0.5%	-8.9%	0.10	0.52	1.7%	0.3%	0.259	0.186	0.46%	
Total Banking Sector - 10 Companies							26,828			25.20	34.09					61.40%	
Basic Materials		Price			Valuation Multiples			MKT Cap	Price Performance		Trading Indicators		ROE	ROA	52 Week (KD)		MKT Cap
Company	Close (KD)	Day Δ	Day % Δ	PBV(X)	PE(X)	DY%	Mn KD	MTD(%)	YTD (%)	Value (Mn KD)	(Mn Shrs)	(%)	(%)	High	Low	%	
Qurain Petrochemical Industries	0.248	0.000	0.00%	0.61	9.49	7.26	266	-1.59%	-28.53%	0.04	0.17	6.4%	5.2%	0.403	0.210	0.61%	
Boubyan Petrochemical	0.798	-0.001	-0.13%	1.63	9.04	7.51	416	0.13%	-6.22%	0.32	0.40	19.1%	10.1%	1.125	0.769	0.95%	
Al Kout Industrial Projects	0.390	0.000	0.00%	1.40	4.93	10.26	39	0.00%	-21.37%	0.00	0.00	30.5%	20.1%	0.545	0.390	0.09%	
Kuwait Foundry	0.291	-0.001	-0.34%	1.21	12.44	0.00	21	0.34%	-20.87%	0.00	0.00	10.7%	10.3%	0.424	0.260	0.05%	
Total Basic Materials - 4 Companies							743			0.36	0.58					1.70%	
Consumer Goods		Price			Valuation Multiples			MKT Cap	Price Performance		Trading Indicators		ROE	ROA	52 Week (KD)		MKT Cap
Company	Close (KD)	Day Δ	Day % Δ	PBV(X)	PE(X)	DY%	Mn KD	MTD(%)	YTD (%)	Value (Mn KD)	(Mn Shrs)	(%)	(%)	High	Low	%	
Mezzan Holding	0.358	-0.002	-0.56%	1.05	36.89	4.36	111	-1.1%	-37.7%	0.49	1.36	2.8%	1.3%	0.613	0.358	0.25%	
Livestock Transport and Trading	0.119	-0.002	-1.65%	0.75	NM	0.00	25	-0.8%	-33.5%	0.00	0.01	-14.5%	-8.2%	0.196	0.112	0.06%	
Total Consumer Goods - 2 Companies							136			0.49	1.37					0.31%	
Consumer Services		Price			Valuation Multiples			MKT Cap	Price Performance		Trading Indicators		ROE	ROA	52 Week (KD)		MKT Cap
Company	Close (KD)	Day Δ	Day % Δ	PBV(X)	PE(X)	DY%	Mn KD	MTD(%)	YTD (%)	Value (Mn KD)	(Mn Shrs)	(%)	(%)	High	Low	%	
Jazeera Airways	1.731	-0.016	-0.92%	10.33	13.33	2.63	381	3.6%	35.4%	0.90	0.52	92.1%	11.6%	2.099	0.981	0.87%	
Kuwait National Cinema	0.950	0.041	4.51%	1.11	8.85	3.30	88	4.6%	3.1%	0.02	0.03	13.3%	6.1%	0.933	0.850	0.20%	
Oula Fuel Marketing	0.150	0.005	3.45%	0.90	15.64	3.45	61	3.4%	-7.1%	0.03	0.18	5.6%	2.9%	0.178	0.140	0.14%	
Al Soor Fuel Marketing	0.151	0.000	0.00%	0.89	19.26	3.31	61	1.3%	-2.6%	0.05	0.31	4.8%	3.6%	0.175	0.142	0.14%	
Sultan Center Food Products	0.110	0.000	0.00%	0.63	0.88	0.00	31	-0.9%	-47.6%	0.00	0.01	74.2%	12.2%	0.269	0.103	0.07%	
Jiyad Holding	0.022	0.000	-1.83%	0.25	NM	0.00	4	-1.8%	-72.9%	0.02	0.74	-16.2%	-10.9%	0.099	0.015	0.01%	
IFA Hotels and Resorts	0.027	-0.001	-3.23%	3.68	186.00	0.00	17	0.0%	-47.9%	0.07	2.56	2.0%	0.4%	0.073	0.025	0.04%	
Kuwait Resorts	0.075	-0.001	-0.66%	0.49	10.62	3.90	15	-2.1%	-21.8%	0.03	0.46	4.8%	4.2%	0.110	0.067	0.03%	
Future Kid Entertainment and Real Estate	0.113	-0.005	-4.24%	1.02	10.32	0.00	12	-2.6%	49.9%	0.00	0.01	10.4%	4.7%	0.130	0.074	0.03%	
Al Eid Food	0.244	0.003	1.24%	1.90	14.65	2.84	41	2.1%	4.4%	0.21	0.85	13.5%	10.1%	0.304	0.207	0.09%	
Kuwait Hotels	0.170	0.006	3.66%	1.97	20.37	3.05	10	4.3%	134.3%	0.00	0.01	9.9%	6.4%	0.201	0.070	0.02%	
Palms Agro Production	0.078	0.000	0.00%	0.79	NM	0.00	4	0.0%	14.4%	0.00	0.00	-13.8%	-10.9%	0.083	0.043	0.01%	
ALI ALGanim	0.805	0.006	0.75%	3.69	12.53	5.95	223	1.3%	nm	0.54	0.68	27.8%	10.9%	0.966	0.750	0.51%	
Total Consumer Services - 13 Companies							948			1.87	6.34					2.17%	

DAILY MARKET COVERAGE REPORT

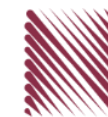
NIC MENA SECURITIES - RESEARCH AND STUDIES DEP



Financial Services Company	Price			Valuation Multiples			MKT Cap	Price Performance		Trading Indicators		ROE	ROA	52 Week (KD)		MKT Cap
	Close (KD)	Day Δ	Day % Δ	PBV(X)	PE(X)	DY%	Mn KD	MTD(%)	YTD (%)	Value (Mn KD)	(Mn Shrs)	(%)	(%)	High	Low	%
Egypt Kuwait Holding	0.370	-0.013	-3.39%	2.13	5.78	5.58	417	-3.4%	-9.7%	0.10	0.28	37.1%	17.5%	0.465	0.353	0.95%
Kuwait Projects Company Holding	0.118	-0.001	-0.84%	0.63	305.13	4.20	289	0.0%	-16.2%	0.17	1.48	0.2%	0.1%	0.215	0.112	0.66%
National Industries Group Holding	0.237	-0.002	-0.84%	1.00	5.50	4.65	511	1.3%	-0.8%	1.82	7.68	15.2%	6.5%	0.314	0.207	1.17%
Boursa Kuwait Securities Co	2.305	-0.009	-0.39%	7.42	24.07	2.81	463	1.5%	14.6%	0.21	0.09	32.4%	22.9%	2.870	1.800	1.06%
GFH Financial Group	0.077	-0.001	-0.91%	0.87	9.28	4.70	267	-1.7%	-21.4%	0.28	3.67	9.3%	1.2%	0.109	0.073	0.61%
National Investments	0.257	0.010	4.05%	0.98	9.23	18.22	205	7.5%	12.8%	0.68	2.68	10.9%	8.9%	0.475	0.201	0.47%
Tamdeen Investment	0.625	0.000	0.00%	0.72	16.16	1.60	213	13.6%	64.9%	0.00	0.00	4.9%	3.8%	0.625	0.309	0.49%
Alimtiq Investment Group	0.075	0.000	0.00%	0.44	NM	12.08	76	-0.1%	-36.9%	0.01	0.16	-0.9%	-0.4%	0.138	0.069	0.17%
Commercial Facilities	0.174	-0.004	-2.25%	0.57	8.79	8.43	88	-1.1%	-13.6%	0.01	0.08	6.5%	3.6%	0.228	0.165	0.20%
Aayan Leasing and Investment	0.132	0.003	2.33%	0.96	12.22	0.00	88	3.1%	-22.1%	1.33	10.24	8.2%	6.0%	0.204	0.104	0.20%
Kuwait Investment	0.130	-0.002	-1.52%	0.63	7.65	18.94	71	-1.5%	-53.0%	0.04	0.33	8.1%	4.6%	0.317	0.113	0.16%
Noor Financial Investment	0.183	0.003	1.67%	1.11	5.03	2.67	93	1.7%	-29.2%	0.05	0.26	22.7%	16.0%	0.319	0.163	0.21%
Arzan Financial Group for Financing and Investmei	0.127	-0.002	-1.55%	0.90	9.49	1.87	102	-3.8%	-17.1%	0.42	3.32	9.4%	7.0%	0.180	0.109	0.23%
Kuwait Financial Centre	0.106	-0.002	-1.85%	0.53	8.17	8.82	53	-0.9%	-37.3%	0.01	0.08	6.9%	4.0%	0.197	0.101	0.12%
Gulf Investment House	0.390	0.000	0.00%	3.72	NM	0.00	159	-2.3%	30.0%	0.00	0.00	-3.0%	-2.0%	0.422	0.217	0.36%
Arabi Group Holdings	0.296	0.000	0.00%	1.77	NM	0.00	49	3.1%	1.7%	0.02	0.08	-29.0%	-4.0%	0.499	0.169	0.11%
Kuwait and Middle East Financial Investment	0.116	-0.004	-3.33%	1.04	13.97	5.83	26	-12.8%	-20.0%	0.00	0.03	7.5%	5.2%	0.175	0.094	0.06%
Privatization Holding	0.034	-0.002	-5.79%	0.30	NM	0.00	21	-7.3%	-33.8%	0.02	0.67	-7.1%	-5.5%	0.070	0.032	0.05%
Asiya Capital Investments	0.044	-0.001	-2.46%	0.41	2.84	0.00	34	-1.8%	-13.8%	0.12	2.65	17.9%	17.6%	0.071	0.037	0.08%
Umm Al Qaiwain General Investment Co	0.094	0.000	0.00%	0.57	4.97	5.32	34	0.0%	7.8%	0.00	0.00	12.0%	10.0%	0.108	0.086	0.08%
Securities House	0.058	-0.002	-2.70%	0.60	10.14	0.00	25	-2.4%	-39.9%	0.03	0.47	5.8%	5.0%	0.114	0.052	0.06%
Kamco Investment	0.098	0.000	0.10%	0.54	3.85	10.27	33	-1.5%	-24.5%	0.03	0.36	14.5%	6.9%	0.167	0.089	0.08%
First Investment	0.074	0.000	-0.27%	0.65	106.29	0.00	33	-0.8%	-11.6%	0.01	0.18	0.6%	0.7%	0.104	0.068	0.08%
Inovest BSC Public	0.077	0.000	0.39%	0.00	NM	0.00	23	-0.8%	-35.3%	0.00	0.00	2.7%	1.7%	0.189	0.070	0.05%
Coast Investment and Development	0.075	0.000	0.00%	0.74	10.26	6.67	35	-2.6%	-28.6%	0.00	0.00	7.2%	6.8%	0.126	0.066	0.08%
Al Madar Investment	0.097	0.000	0.00%	0.92	56.73	0.00	20	-1.0%	-18.5%	0.00	0.00	1.6%	1.7%	0.124	0.083	0.05%
Bayan Investment	0.041	0.000	0.00%	0.31	NM	0.00	15	0.1%	-28.7%	0.00	0.00	-0.5%	-0.6%	0.071	0.036	0.03%
Al Manar Financing and Leasing	0.059	-0.003	-4.84%	0.61	20.20	0.00	16	-2.5%	-0.5%	0.05	0.80	2.9%	2.3%	0.079	0.049	0.04%
Manazel Holding	0.028	0.001	2.21%	0.59	9.28	0.00	12	1.5%	-47.1%	0.00	0.08	6.2%	2.0%	0.060	0.025	0.03%
Kuwait Finance and Investment	0.066	0.000	0.00%	0.49	28.70	0.00	20	4.8%	-24.0%	0.00	0.01	1.7%	1.6%	0.103	0.055	0.05%
National International Holding	0.104	-0.001	-0.95%	0.64	14.42	4.62	23	-5.5%	-28.8%	0.01	0.06	4.1%	2.8%	0.167	0.091	0.05%
Osoul Investment	0.090	0.001	1.12%	0.81	NM	11.90	11	1.1%	8.9%	0.02	0.22	-4.4%	-4.0%	0.118	0.062	0.03%
UniCap Investment and Finance	0.055	0.000	0.73%	0.61	64.71	0.00	12	-0.2%	-19.7%	0.00	0.00	1.9%	0.2%	0.087	0.050	0.03%
Amar Finance and Leasing	0.063	0.000	0.00%	0.58	3.42	0.00	12	0.0%	-3.8%	0.00	0.00	18.6%	17.3%	0.082	0.058	0.03%
Gulf North Africa Holding	0.151	0.002	1.34%	1.72	59.40	0.00	20	2.0%	73.1%	0.22	1.48	3.0%	2.4%	0.141	0.057	0.05%
International Financial Advisors	0.090	0.000	0.00%	0.58	36.14	0.00	22	3.4%	-20.4%	0.00	0.00	1.9%	0.7%	0.129	0.082	0.05%
Credit Rating and Collection	0.016	0.000	1.27%	0.54	NM	0.00	3	-0.6%	-60.9%	0.00	0.00	-0.4%	-0.3%	0.069	0.014	0.01%
Ekttitab Holding	0.011	0.000	0.93%	0.35	NM	0.00	3	1.9%	-49.3%	0.00	0.41	-16.8%	-12.9%	0.024	0.009	0.01%
Kuwait Syrian Holding Co	0.034	0.000	0.59%	0.33	5.45	0.00	6	0.0%	-21.0%	0.00	0.02	8.7%	6.2%	0.060	0.026	0.01%
Warba Capital Holding	0.084	0.000	0.12%	0.93	NM	0.00	8	-1.5%	-2.4%	0.00	0.00	-0.8%	-0.7%	0.120	0.070	0.02%
National Consumer Holding	0.111	0.000	0.00%	5.03	NM	0.00	33	0.0%	-7.4%	0.24	2.12	-8.0%	-7.5%	0.162	0.097	0.08%
Al Deera Holding	0.175	0.012	7.36%	1.09	8.21	0.00	16	4.8%	-18.5%	0.00	0.00	12.5%	6.5%	0.200	0.145	0.04%
AL Safat Investment	0.098	-0.002	-2.01%	1.27	NM	0.00	28	-0.8%	-18.3%	0.20	2.08	-1.8%	-1.6%	0.270	0.091	0.06%
Gulf Franchising Holding	0.082	0.000	0.00%	1.61	NM	0.00	3	0.0%	-14.5%	0.00	0.00	-5.7%	-1.6%	0.148	0.063	0.01%
Total Financial Services - 44 Companies							3,691			6.12	42.06					8.45%

DAILY MARKET COVERAGE REPORT

NIC MENA SECURITIES - RESEARCH AND STUDIES DEP

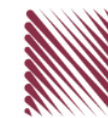


Health Care	Price			Valuation Multiples			MKT Cap	Price Performance		Trading Indicators		ROE	ROA	52 Week (KD)		MKT Cap
	Company	Close (KD)	Day Δ	Day % Δ	PBV(X)	PE(X)		DY%	Mn KD	MTD(%)	YTD (%)			Value (Mn KD)	(Mn Shrs)	
Al-Maidan Clinic for Oral Health Services	0.694	0.000	0.00%	2.75	15.27	0.00	156	-0.1%	-49.6%	0.00	0.00	19.4%	12.5%	1.400	0.556	0.36%
Advanced Technology	0.470	0.000	0.00%	1.05	10.15	3.19	71	-5.8%	-9.3%	0.00	0.00	10.7%	2.1%	0.595	0.450	0.16%
Yiaco Medical	0.450	0.000	0.00%	43.51	NM	0.00	8	0.0%	2.7%	0.00	0.00	-161.7%	-4.7%	0.480	0.399	0.02%
Total Health Care - 3 Companies							234			0.00	0.00					0.54%

Industrials	Price			Valuation Multiples			MKT Cap	Price Performance		Trading Indicators		ROE	ROA	52 Week (KD)		MKT Cap
	Company	Close (KD)	Day Δ	Day % Δ	PBV(X)	PE(X)		DY%	Mn KD	MTD(%)	YTD (%)			Value (Mn KD)	(Mn Shrs)	
Agility Public Warehousing	0.778	-0.002	-0.26%	1.33	59.91	2.14	1,965	-0.8%	-1.0%	1.13	1.45	2.7%	2.2%	1.062	0.634	4.50%
Human Soft Holding	3.371	-0.019	-0.56%	3.41	7.14	11.80	410	0.3%	5.1%	0.36	0.11	49.6%	34.9%	3.704	3.006	0.94%
Alafco Aviation Lease and Finance	0.166	0.002	1.22%	0.61	NM	0.00	158	-1.2%	-24.8%	0.33	2.00	-15.9%	-3.4%	0.256	0.162	0.36%
Kuwait Cement	0.230	0.005	2.22%	0.82	NM	2.22	164	9.0%	-2.6%	0.01	0.03	-1.1%	-0.7%	0.295	0.194	0.38%
Gulf Cable and Electrical Industries	1.206	0.005	0.42%	1.11	11.14	5.00	251	0.1%	37.9%	0.09	0.07	11.0%	9.0%	1.850	0.860	0.57%
Integrated Holding	0.330	0.003	0.92%	1.35	25.00	3.06	83	1.2%	-11.6%	2.62	7.89	5.4%	3.4%	0.478	0.321	0.19%
Kuwait Portland Cement	0.865	0.013	1.53%	1.19	17.82	8.22	87	3.6%	-13.1%	0.02	0.03	6.8%	5.3%	1.240	0.751	0.20%
Educational Holding Group	2.490	0.040	1.63%	4.16	9.30	21.75	52	1.6%	-38.8%	0.01	0.00	30.0%	17.2%	4.987	2.330	0.12%
United Projects for Aviation Services	0.212	-0.011	-4.93%	0.82	79.64	0.00	80	3.9%	-10.1%	0.00	0.02	1.0%	0.6%	0.318	0.182	0.18%
Heavy Engineering Industries and Shipbuilding	0.634	0.000	0.00%	1.70	20.94	3.15	114	1.4%	24.6%	0.06	0.10	8.2%	3.2%	0.960	0.442	0.26%
National Industries	0.200	0.009	4.71%	0.77	11.14	5.24	70	4.7%	-1.0%	0.01	0.04	6.8%	5.1%	0.260	0.181	0.16%
ACICO Industries	0.092	0.001	1.10%	0.41	NM	0.00	30	1.4%	-34.5%	0.03	0.29	-1.9%	-0.5%	0.208	0.076	0.07%
Kuwait Company for Process Plant Construction a	0.311	0.003	0.97%	1.24	19.96	8.04	37	1.3%	-35.1%	0.00	0.00	6.1%	3.5%	0.522	0.286	0.08%
Ras Al Khaimah for White Cement and Constructi	0.140	0.000	0.00%	1.28	28.63	5.92	70	0.0%	11.1%	0.00	0.00	4.6%	3.7%	0.175	0.113	0.16%
Combined Group Contracting	0.407	-0.003	-0.73%	1.52	6.28	6.10	70	-0.7%	15.8%	0.30	0.75	26.3%	5.8%	0.500	0.308	0.16%
Kuwait and Gulf Link Transport	0.059	0.001	1.74%	0.34	3.10	0.00	16	1.7%	-15.7%	0.00	0.00	11.6%	2.6%	0.106	0.054	0.04%
Shuaiba Industrial	0.149	0.000	0.00%	0.82	12.40	8.05	15	0.0%	-33.8%	0.00	0.01	6.6%	5.4%	0.310	0.137	0.03%
National Cleaning	0.036	-0.002	-4.83%	0.30	NM	0.00	8	-5.3%	-34.4%	0.00	0.01	-13.9%	-4.1%	0.080	0.031	0.02%
Fujairah Cement Industries	0.035	-0.002	-5.46%	0.22	NM	0.00	12	-9.9%	-32.2%	0.01	0.15	-12.7%	-6.3%	0.069	0.028	0.03%
Mubarrad Holding	0.080	0.000	-0.50%	0.61	8.44	6.26	13	-0.6%	-27.4%	0.00	0.00	7.3%	6.5%	0.130	0.071	0.03%
Specialities Group Holding	0.096	0.003	3.13%	0.49	10.08	7.33	15	4.0%	-25.4%	0.05	0.49	5.0%	3.6%	0.152	0.076	0.04%
Salbookh Trading	0.018	0.001	4.05%	0.52	NM	0.00	2	-2.7%	-60.1%	0.00	0.03	-51.7%	-28.6%	0.061	0.016	0.00%
Metal and Recycling	0.098	0.003	2.95%	1.23	NM	0.00	9	8.4%	0.0%	0.00	0.00	-12.0%	-2.0%	0.136	0.060	0.02%
Equipment Holding	0.037	0.000	0.00%	0.60	NM	0.00	3	16.9%	-31.4%	0.01	0.20	-11.1%	-3.2%	0.079	0.030	0.01%
Jassim Transport & Stevedoring	0.330	0.000	0.00%	1.12	14.39	4.85	50	0.3%	-18.9%	0.01	0.12	8.0%	6.3%	0.410	0.300	0.11%
Total Industrials - 24 Companies							3,785			5.04	13.78					8.66%

DAILY MARKET COVERAGE REPORT

NIC MENA SECURITIES - RESEARCH AND STUDIES DEP

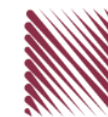


Insurance	Price			Valuation Multiples			MKT Cap	Price Performance		Trading Indicators		ROE	ROA	52 Week (KD)		MKT Cap
	Company	Close (KD)	Day Δ	Day % Δ	PBV(X)	PE(X)	DY%	Mn KD	MTD(%)	YTD (%)	Value (Mn KD)	(Mn Shrs)	(%)	(%)	High	Low
Gulf Insurance Group	0.985	0.000	0.00%	1.14	4.22	10.76	279	0.0%	-7.9%	0.00	0.00	28.6%	5.5%	1.200	0.920	0.64%
Al Ahleia Insurance	0.491	-0.018	-3.54%	0.85	7.02	6.88	106	-3.5%	0.8%	0.17	0.35	12.5%	4.4%	0.612	0.453	0.24%
Kuwait Insurance	0.505	-0.004	-0.79%	0.77	7.89	6.48	93	2.2%	31.5%	0.01	0.02	10.4%	6.1%	0.510	0.379	0.21%
Kuwait Reinsurance	0.286	0.000	0.00%	1.03	10.10	1.60	68	0.0%	13.4%	0.00	0.00	10.8%	3.4%	0.373	0.217	0.16%
Bahrain Kuwait Insurance	0.191	0.000	0.00%	1.33	11.98	8.44	29	0.0%	0.0%	0.00	0.00	11.0%	2.1%	0.191	0.191	0.07%
Warba Insurance and Reinsurance	0.128	0.000	0.00%	0.55	8.90	7.81	22	1.6%	-19.5%	0.00	0.00	6.2%	2.1%	0.165	0.119	0.05%
First Takaful Insurance	0.046	0.000	0.00%	0.60	284.38	0.00	5	0.0%	-9.0%	0.00	0.00	0.2%	0.1%	0.081	0.034	0.01%
Wethaq Takaful Insurance	0.037	0.000	0.00%	0.33	19.37	0.00	4	0.0%	-27.3%	0.00	0.00	1.7%	1.7%	0.102	0.024	0.01%
Total Insurance - 8 Companies							606			0.18	0.36					1.39%

Energy	Price			Valuation Multipels			MKT Cap	Price Performance		Trading Indicators		ROE	ROA	52 Week (KD)		MKT Cap
	Company	Close (KD)	Day Δ	Day % Δ	PBV(X)	PE(X)	DY%	Mn KD	MTD(%)	YTD (%)	Value (Mn KD)	(Mn Shrs)	(%)	(%)	High	Low
National Petroleum Services	0.724	0.016	2.26%	1.79	12.69	4.94	70	3.9%	-13.7%	0.00	0.00	14.5%	11.6%	0.880	0.625	0.16%
Independent Petroleum Group	0.435	-0.005	-1.14%	0.81	14.74	6.82	79	1.2%	-25.2%	0.00	0.01	5.5%	1.0%	0.612	0.368	0.18%
Burgan for Well Drilling Trading and Maintenance	0.117	0.003	2.63%	0.42	9.56	2.39	31	1.7%	-14.7%	0.01	0.08	4.4%	1.4%	0.161	0.094	0.07%
Energy House Holding	0.022	0.000	0.00%	0.79	NM	0.00	16	0.0%	-65.6%	0.00	0.00	-1.4%	-2.5%	0.086	0.019	0.04%
Gulf Petroleum Investment	0.015	0.000	0.00%	0.22	NM	0.00	7	-3.7%	-37.1%	0.00	0.09	-4.0%	-2.6%	0.031	0.013	0.02%
Senergy Holding	0.037	-0.003	-7.59%	0.79	47.02	0.00	7	-6.2%	-19.4%	0.01	0.35	1.7%	1.4%	0.063	0.036	0.02%
Total Energy - 6 Companies							210			0.03	0.53					0.48%

DAILY MARKET COVERAGE REPORT

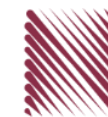
NIC MENA SECURITIES - RESEARCH AND STUDIES DEP



Real Estate	Price		Valuation Multiples				MKT Cap	Performance		Trading Indicators		ROE	ROA	2 Week (KD)		MKT Cap
Company	Close (KD)	Day Δ	Day % Δ	PBV(X)	PE(X)	DY%	Mn KD	MTD(%)	YTD (%)	Value (Mn KD)	(Mn Shrs)	(%)	(%)	High	Low	%
Mabaneer Co.	0.875	-0.014	-1.57%	1.96	18.40	1.49	1,086	0.3%	18.8%	0.33	0.38	11.1%	5.5%	0.910	0.717	2.49%
Salhia Real Estate	0.475	0.006	1.28%	1.56	20.04	3.05	245	1.9%	-6.9%	0.47	1.00	7.9%	3.2%	0.578	0.428	0.56%
Commercial Real Estate	0.098	-0.001	-0.51%	0.60	10.16	5.06	173	-1.1%	-20.9%	0.44	4.44	6.2%	3.3%	0.140	0.094	0.40%
National Real Estate	0.139	0.001	0.72%	0.77	1.25	0.00	258	-0.7%	-25.1%	0.13	0.92	64.5%	38.6%	0.212	0.125	0.59%
Tamdeen Real Estate	0.380	0.000	0.00%	0.74	8.75	2.63	153	2.7%	12.1%	0.00	0.00	9.2%	3.9%	0.380	0.296	0.35%
Kuwait Real Estate	0.104	-0.001	-0.95%	0.77	12.79	2.77	96	-5.5%	-39.6%	0.35	3.37	6.0%	2.5%	0.187	0.097	0.22%
United Real Estate	0.076	0.003	3.57%	0.46	227.81	0.00	81	5.6%	-3.3%	0.11	1.52	0.2%	-0.1%	0.121	0.064	0.19%
First Dubai for Real Estate Development	0.051	-0.002	-3.58%	0.50	24.54	0.00	38	2.4%	-49.6%	0.07	1.45	2.1%	1.7%	0.120	0.044	0.09%
Al Mazaya Holding	0.049	0.000	-0.81%	0.50	37.14	0.00	31	-1.0%	-35.4%	0.02	0.49	1.3%	0.7%	0.089	0.043	0.07%
Ajial Real Estate Entertainment	0.274	0.000	0.00%	0.40	16.90	1.82	53	0.4%	-9.9%	0.00	0.00	2.4%	2.0%	0.345	0.268	0.12%
Injazzat Real Estate Development	0.079	0.002	2.34%	0.45	6.15	6.49	27	1.9%	-23.0%	0.01	0.07	7.5%	3.9%	0.114	0.070	0.06%
Munshaat Real Estate Projects	0.063	0.003	4.50%	1.80	4.97	0.00	20	4.5%	-16.1%	0.00	0.01	42.9%	4.5%	0.076	0.052	0.05%
Aayan Real Estate	0.068	0.000	0.00%	0.48	22.15	0.00	28	1.5%	-23.2%	0.00	0.01	2.2%	2.3%	0.105	0.056	0.06%
Al Argan International Real Estate	0.095	0.002	2.15%	0.31	34.07	0.00	24	8.6%	-20.5%	0.01	0.06	0.9%	0.3%	0.144	0.073	0.06%
Al-Enmaa Real Estate	0.056	-0.002	-2.80%	0.63	NM	0.00	25	-6.2%	-23.4%	0.00	0.06	-5.9%	NM	0.091	0.050	0.06%
Arkan Al Kuwait Real Estate	0.120	0.000	0.00%	0.85	11.70	5.00	30	-3.2%	-3.2%	0.00	0.00	7.4%	2.3%	0.152	0.113	0.07%
Kuwait Business Town Real Estate	0.057	-0.002	-4.07%	0.74	16.43	0.00	33	-3.4%	-27.5%	0.16	2.66	3.8%	2.8%	0.100	0.046	0.07%
Dalqan Real Estate	0.208	-0.001	-0.48%	1.87	193.52	0.00	13	0.5%	-3.7%	0.01	0.07	1.0%	1.0%	0.269	0.195	0.03%
Sokouk Holding	0.024	-0.001	-2.83%	0.58	NM	0.00	14	-2.8%	-24.2%	0.00	0.08	-2.9%	-1.7%	0.038	0.020	0.03%
Tijara and Realestate Investment	0.053	0.000	0.19%	0.48	8.09	5.64	20	-1.3%	-12.9%	0.01	0.19	6.0%	3.3%	0.089	0.044	0.05%
Al-Arabiya Real Estate	0.029	0.000	-0.34%	0.35	NM	0.00	15	-1.0%	-30.8%	0.02	0.67	-23.1%	-7.3%	0.052	0.026	0.03%
Aqar Real Estate Investments	0.059	0.003	6.08%	0.46	17.86	5.96	14	6.1%	-29.1%	0.01	0.14	2.6%	2.1%	0.097	0.052	0.03%
Mashaer Holding	0.055	0.000	0.00%	0.65	NM	0.00	10	0.4%	-21.3%	0.00	0.01	-6.5%	-3.2%	0.086	0.049	0.02%
Dar Al Thuraya Real Estate	0.170	0.000	0.00%	1.47	25.07	0.00	25	0.0%	61.9%	0.00	0.00	6.0%	5.3%	0.172	0.092	0.06%
Osos Holding Group	0.105	0.000	0.00%	0.92	8.36	9.52	11	-4.5%	0.0%	0.00	0.00	11.2%	7.1%	0.147	0.094	0.03%
Al Massaleh Real Estate	0.036	0.001	3.80%	0.56	NM	0.00	8	1.4%	-34.4%	0.00	0.02	-15.4%	-3.2%	0.060	0.030	0.02%
Kuwait Remal Real Estate	0.008	0.000	3.85%	1.00	NM	0.00	2	1.3%	-59.2%	0.00	0.33	-110.3%	-12.4%	0.024	0.007	0.01%
Kuwait Real Estate Holding	0.034	0.000	0.00%	0.64	12.32	0.00	6	0.0%	-35.6%	0.00	0.00	5.1%	1.7%	0.059	0.032	0.01%
Taameer Real Estate Investment	0.025	0.001	2.46%	0.39	NM	0.00	6	5.0%	-40.9%	0.00	0.01	-6.5%	-4.9%	0.054	0.018	0.01%
Sanam Real Estate	0.065	0.000	-0.15%	0.85	28.93	0.00	8	-0.2%	-17.9%	0.00	0.01	2.9%	2.8%	0.100	0.053	0.02%
Mena Real Estate	0.030	0.000	0.00%	0.27	NM	0.00	4	3.5%	-40.2%	0.00	0.00	-6.8%	-5.4%	0.098	0.028	0.01%
Al Masaken International Real Estate Developmen	0.028	0.000	0.00%	0.46	NM	0.00	3	-0.7%	-35.5%	0.00	0.09	-1.1%	-0.4%	0.069	0.027	0.01%
Real Estate Trade Centers	0.050	0.002	4.59%	0.27	20.04	0.00	7	-2.3%	-31.6%	0.00	0.00	1.3%	1.1%	0.123	0.043	0.02%
Land United Real Estate	0.068	0.000	0.00%	0.60	NM	0.00	10	0.0%	-27.6%	0.00	0.00	-4.8%	-1.5%	0.118	0.052	0.02%
Total Real Estate - 34 Companies							2,575			2.16	18.04					5.89%

DAILY MARKET COVERAGE REPORT

NIC MENA SECURITIES - RESEARCH AND STUDIES DEP



Technology	Price			Valuation Multiples			MKT Cap	Price Performance		Trading Indicators		ROE	ROA	52 Week (KD)		MKT Cap
	Close (KD)	Day Δ	Day % Δ	PBV(X)	PE(X)	DY%		Mn KD	MTD(%)	YTD (%)	Value (Mn KD)			(Mn Shrs)	(%)	
Automated Systems	0.083	-0.004	-4.60%	0.77	NM	0.00	8	-1.0%	-7.4%	0.00	0.00	-3.4%	-3.0%	0.116	0.074	0.02%
Total Technology - 1 Companies				0.77	NM	0.0%	8			0.00	0.00	-3.40%	-2.96%			0.02%

Telecom	Price			Valuation Multiples			MKT Cap	Price Performance		Trading Indicators		ROE	ROA	52 Week (KD)		MKT Cap
	Company	Close (KD)	Day Δ	Day % Δ	PBV(X)	PE(X)		DY%	Mn KD	MTD(%)	YTD (%)			Value (Mn KD)	(Mn Shrs)	
Mobile Telecommunications	0.600	-0.004	-0.66%	2.20	14.28	5.46	2,596	0.5%	1.5%	2.41	4.02	15.6%	4.3%	0.698	0.564	5.94%
Kuwait Telecommunications	0.590	-0.004	-0.67%	2.56	13.08	5.05	589	0.0%	38.9%	0.14	0.24	20.3%	11.1%	1.189	0.418	1.35%
National Mobile Telecommunications	1.019	0.016	1.60%	0.95	13.02	3.49	511	-0.6%	60.7%	0.02	0.02	7.2%	4.2%	1.280	0.615	1.17%
AAN Digital Services	0.016	0.000	0.00%	0.60	NM	0.00	14	0.0%	-2.4%	0.00	0.00	NM	NM	0.020	0.016	0.03%
Hayat Communications	0.058	0.000	-0.17%	0.46	NM	0.00	5	-1.9%	-45.3%	0.00	0.01	-0.7%	-0.3%	0.124	0.050	0.01%
Telecom - 5 Companies							3,715			2.57	4.29					8.50%

Utilities	Price			Valuation Multiples			MKT Cap	Price Performance		Trading Indicators		ROE	ROA	52 Week (KD)		MKT Cap
	Company	Close (KD)	Day Δ	Day % Δ	PBV(X)	PE(X)		DY%	Mn KD	MTD(%)	YTD (%)			Value (Mn KD)	(Mn Shrs)	
Shamal Az-Zour Al-Oula Power & Water	0.193	0.000	0.00%	2.17	14.78	9.33	212	0.0%	-15.4%	0.18	0.93	19.1%	2.9%	0.247	0.188	0.49%
Total Utilities - 1 Companies							212			0.18	0.93					0.49%

Total Market 156 Companies				1.94	31.04	4.12	43,693			44.19	122.27					100%
-----------------------------------	--	--	--	-------------	--------------	-------------	---------------	--	--	--------------	---------------	--	--	--	--	-------------

End of Report

The information contained in this document is proprietary to NIC and is for use only by the persons to whom it is issued. This document is confidential and may not be distributed either in part or in whole without the express agreement of NIC. It is intended solely for the use of the individual or entity to whom it is addressed and others authorized to receive it.

Note : ROE and ROA is calculated based on LFY net profit & shareholders' equity and LFY Operating Profits & Total Assets

Sources : National Investments Company Research and Studies Departments, Boursa, Refinitiv.



شركة الاستثمار الوطنية
NATIONAL INVESTMENTS COMPANY

Sharq, Al Mutanabi Street, Khaleejia Tower | P.O. Box 25667, Safat 13117, Kuwait

T.: +965 2226 6666 | Fax: +965 2226 6793 | www.nic.com.kw